

# A COMMON MOTH IN AUCKLAND.

K. J. WISE, Plant Diseases Division, Auckland.

In the city and environs of Auckland the small brassy-brown moth *Opogona omoscopa* Meyr. (Fam. Lyonetiadae) is to be seen so often, and in so many places, that it appears to be one of the commonest moths in this area. A collection of moths attracted to light confirms observations.

For the period 14th May to 13th June, 1952, at the Plant Diseases Division, Mount Albert, Auckland, a 200 watt blended bulb (incandescent + mercury vapour) was used in a basement room in which the window and light were at ground-level.

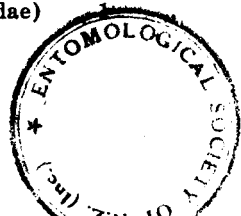
Two collections were made of the moths attracted and killed by the bulb which was in use continuously night and day. Species were represented as follows:

## 1. COLLECTION MADE ON 19/5/52.

<i>Opogona omoscopa</i> (Meyr.) (Fam. Lyonetiadae).....	559	specimens
<i>Gnorimoschema operculella</i> (Zell.) (Fam. Gelechiidae) .....	2	"
<i>Gnorimoschema plaesiosoma</i> (Turn.) (Fam. Gelechiidae) .....	3	"
<i>Endrosis sarcitrella</i> (L.) (Fam. Oecophoridae) .....	1	"
<i>Monopis ethelella</i> (Newm.) (Fam. Tineidae) .....	2	"
<i>Tortrix postvittana</i> Walk. (Fam. Tortricidae) .....	3	"
<i>Crambus vitellus</i> Dbld. (Fam. Crambidae) .....	1	"
<i>Crambus flexuocellus</i> Dbld. (Fam. Crambidae) .....	30	"
<i>Scoparia</i> sp. (Fam. Pyraustidae) .....	16	"
<i>Selidosema suavis</i> (Butl.) (Fam. Geometridae) .....	1	"
<i>Xanthorhoe semifissata</i> (Walk.) (Fam. Geometridae) .....	1	"
<i>Xanthorhoe rosearia</i> (Dbld.) (Fam. Geometridae) .....	1	"
<i>Euchoeca rubropunctaria</i> (Dbld.) (Fam. Geometridae) .....	1	"
<i>Elvia glaucata</i> Walk. (Fam. Geometridae) .....	1	"
<i>Leptomeris rubraria</i> (Dbld.) (Fam. Geometridae) .....	1	"
Unidentified specimens .....	5	

## 2. COLLECTION MADE ON 12/6/52.

<i>Opogona omoscopa</i> (Meyr.) (Fam. Lyonetiadae)	203	specimens
<i>Monopis ethelella</i> (Newm.) (Fam. Tineidae) .....	2	"
<i>Tortrix postvittana</i> Walk. (Fam. Tortricidae) .....	2	"
<i>Tortrix excessana</i> (Walk.) (Fam. Tortricidae) .....	1	"
<i>Crambus flexuocellus</i> Dbld. (Fam. Crambidae) .....	23	"
<i>Scoparia</i> sp. (Fam. Pyraustidae) .....	8	"
<i>Selidosema dejectaria</i> (Walk.) (Fam. Geometridae)		



<b>Phrissogonus laticostatus</b> (Walk.) (Fam. Geometridae)	.....	1	„
<b>Melanchra stipata</b> (Walk.) (Fam. Noctuidae)	.....	1	„
<b>Dasypodia cymatodes</b> Guen (Fam. Noctuidae)	.....	1	„
<b>Plusia chalcites</b> Esp. (Fam. Noctuidae)	.....	1	„
Unidentified specimens	.....	7	

It is apparent that **O. Omoscopia** is one of the predominant species, at least at this time of the year.

Dr. W. J. Hall C.M.G. of the Commonwealth Institute of Entomology, London, has stated (in personal communication) that this species is a pest of banana fruits in sub-tropical countries. It is not considered to be a pest in New Zealand, however, but it may do some damage at times. For record purposes a list is given of the labels (with numbers of specimens) attached to moths which have been bred out and are in the collection of the Plant Diseases Division, Auckland.

Larva boring in strawberry crowns, Palmerston North, July 1934 (15).

Bred from strawberry stems, Palmerston North, 9/8/34 (1).

Bred from end of stored squash, Owairaka 1938. D. Spiller (1).  
ex carrot cage, insectary, Owairaka, 25 Sept. 1942. T. R. Rabone (4).

ex cage containing pumpkin, Auckland, 11 Nov. 1942. W. Cottier (3).

Bred ex larva boring in crown of strawberry. Emerged July 1945. W. Cottier (8).

Boring in bulbs, Hastings. Emerged 29 July 1946. Orchard Instructor (1).

Bred ex peach stone in soil, Owairaka. Emerged 29 July 1946. M. W. Carter (1).

Bred ex strawberry corms, Avondale, Auckland, Sept. 1950. Department of Agriculture (2).

Bred ex strawberry plants, Avondale, Auckland, 19 Sept. 1950. Emerged Jan. 1951. Department of Agriculture (2).

#### ACKNOWLEDGMENT.

Identification of **Opogona omoscopia** Meyr. was confirmed by Dr. T. H. C. Taylor of the Commonwealth Institute of Entomology, London.