

SEXING OF PUPAE OF WISEANA CERVINATA (WALKER) HEPIALIDAE

J. B. IV ALLER,

Entomology Division, D.S.I.R., Nelson.

It has been reported (pers. comm. A. C. Eyles) that pupal size of *W. cervinata* indicates the sex of the insect, the large pupae being female and the small male. Examination of pupae revealed that the position and pattern of the anus of genital openings was not uniform within each group. However, only two types of pattern were observed and these are shown in Fig. 1. A large number of pupae were sorted according to these patterns. The two groups each of 300 pupae were kept at 10°C and the sex of the emergent moths recorded. It was found that all moths which had emerged from pupae with characters shown in Fig. 1 (a) were females and all those from pupae with 1 (b) characters were males. The correlation of pupal size with sex holds for about 90 per cent of pupae in the early part of the season but later the male and female pupae tend to be smaller and of more equal size.

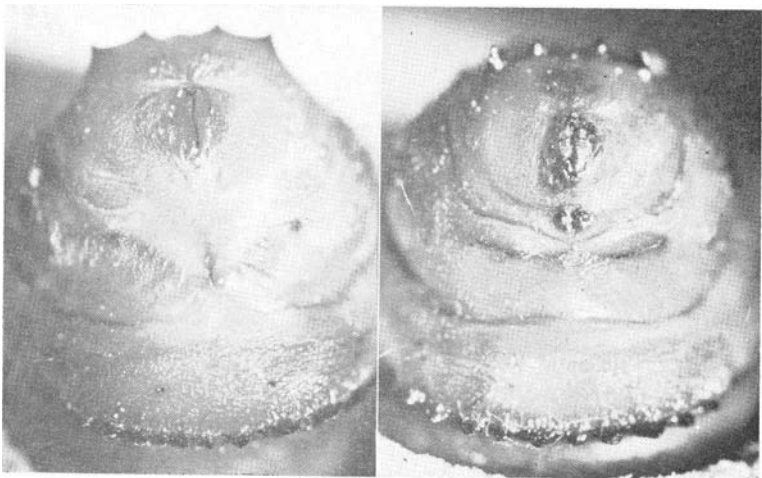


Fig. 1. Pattern of anal and genital openings of *W. cervinata*. (a)

Female. (b) Male.

-Photograph B. S. Eysel